



Who is Mechanic International?

- ✓ Mechanic International is a dynamic family business in Asse, which is located near Brussels.

We are specialized in mechanical and electronic security systems, we also offer all different kinds of containers and container solutions for temporary or permanent projects.

We respond quickly to customer requests and will search a fitting solution together with our customers.

- ✓ Our flexible organization offers a creative, personal and spontaneous approach which leads to good solutions.

What do we do?

- ✓ Mechanic International was founded in 1996 and since then:

We sell high quality security systems for different sectors.

Mechanic International is contacted daily by companies who have been confronted with thefts or are just looking for security solutions or advice.

We work together with different partners like: Assa Abloy, Mul-T-Lock, Squire, CTS, ...

At Mechanic International, we sell many sorts of different padlocks and cylinders that we combine with our own security solutions for containers, machines, trucks, buildings, ...

Because of our many years of experience in the construction sector and logistic sector, we can find a suitable solution within no time.

- ✓ We can also help you with:

- ✓ Renting or buying all types of containers, new or second hand
- ✓ Transporting or modifying shipping containers
- ✓ Building customized containers
- ✓ Container projects from A to Z: the design, the transport and the placement of the containers
- ✓ Cargotecture, a combination of architecture together with containers

Our brands



Sectors

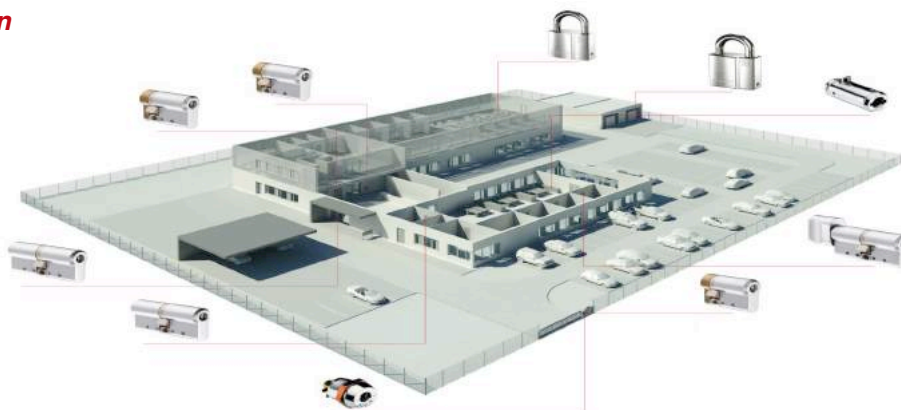
Many different sectors rely on our knowledge of securing their materials and for temporary or permanent spatial solutions



Key plans & key systems

- ✓ All our security systems, padlocks and cylinders are available different keyed, keyed alike or master keyed, these can also be combined into a key plan.

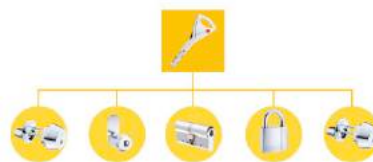
Key plan



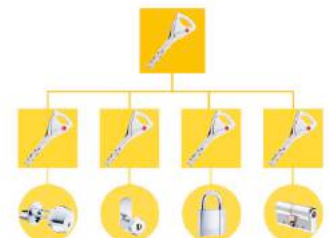
Different keyed



Keyed alike



Master key system



Container & construction site security



CONTAINERSECURITY

- ✓ Security for shipping containers, storage containers, trailers and loading bins
- ✓ Available in different keyed, keyed alike and master keyed
- ✓ Most of our security products have earned a TNO seal of approval

Fixed and portable solutions are possible:

- ✓ CTS container lock with Abloy or Mul-T-Lock padlock (*portable*)
- ✓ Cyclops container lock with Abloy cylinder (*fixed*)
- ✓ MI container lock with integrated cylinder (*portable*)
- ✓ MI container bar lock with Abloy or Mul-T-Lock padlock (*portable*)

LOCKS FOR HOOK LIFT CONTAINERS

- ✓ Security system for hook lift container
- ✓ Available in different keyed, keyed alike or master keyed
- ✓ Prevents the lifting of the container

CONSTRUCTION SITE SECURITY: SAFETY BOX

- ✓ Security system for machines, gates, motorcycles, ...
- ✓ Comes with a cylinder and keys
- ✓ Different models available
- ✓ Available with or without chain or cable
- ✓ Easy to install





TRAILER LOCKS

- ✓ Kingpin locks with integrated cylinder
- ✓ Security systems for double doors, trailers and refrigerated trucks
- ✓ Special trailer security systems for Lamberet, Krone and Schmitz trailers
- ✓ Available as different keyed, keyed alike or master keyed
- ✓ Most of these trailer locks have a TNO seal of approval

TRAILER RING LOCKS

- ✓ Different models available: 38 mm, 48 mm and 66 mm
- ✓ Combined with an Abloy PL358 padlock and a certificate
- ✓ Available as different keyed, keyed alike or master key system

VAN LOCKS

- ✓ To prevent thefts inside of your van, we have simple and cheap solutions to secure your different valuables.
- ✓ Mount these on the back or on the side of your van
- ✓ Available as different keyed, keyed alike or master keyed



PICADO

- ✓ Strap winder with magnetic fixation
- ✓ Never was winding your straps this fast
- ✓ Practical and easy to use



STANDARD PADLOCKS

- ✓ For lockers, luggage, cabinets & toolboxes
- ✓ For indoor usage
- ✓ Brands: Yale, Abus and Squire
- ✓ Padlocks with keys or combination padlocks

HIGH-SECURITY PADLOCKS

- ✓ For machines, containers, gates, bicycles or motorcycles
- ✓ These locks are for outdoor usage and have a long lifespan
- ✓ Brands: Assa-Abloy, Mul-T-Lock and Squire
- ✓ Padlocks with keys or combination padlocks

SAFETY LOCKS



- ✓ Safety locks to make your workspace safer and for the protection of your employees
- ✓ We offer different padlocks and latches in different sizes and colors
- ✓ These locks help prevent accidents
- ✓ Special padlocks for locking machines, valves, switches and plugs

Padlocks and combination locks



INDUSTRIAL PADLOCKS

- ✓ These are suited for extreme weather conditions
- ✓ They offer protection against sand, water and dirt
- ✓ Brand: Assa Abloy IP 68 Weather Proof padlocks
- ✓ Use: installations in telecommunication, energy networks, industry, mines and water utilities

ELECTRONIC PADLOCK: MUL-T-LOCK WATCHLOCK

- ✓ The watchlock is a combination of a padlock and a GPS-system
- ✓ This padlock can provide you information about its location or its state at any given time
- ✓ The padlock can be used on containers containing valuable goods, trucks, industrial plants, and electricity cabinets

Cylinders & keys

CYLINDERS AND KEYS

- ✓ Doorcylinders and cylinders for different uses
- ✓ Brands: Assa Abloy, Mul-T-Lock, and Squire
- ✓ These cylinders can withstand drilling, hammering and picking

KEYS

- ✓ Most keys are delivered with a key certificate, to prevent further duplication without the certificate
- ✓ We also sell a special key management system from Assa Abloy called TRAKA 21

Storage containers & ECO containers

Ideal if you need additional storage space in your company or on site



- ✓ Storage containers are easily moveable with a crane or forklift truck
- ✓ Deliverable with wooden, steel or grated floor (Eco container)
- ✓ Stackable up to 3-high
- ✓ Galvanized door bars
- ✓ Additional doors and windows can be placed
- ✓ Security locks and other modifications are possible

- ✓ With optimal paintwork, all colors are available upon request (RAL-colors)

Dimensions Storage containers:

Storage	Outside dimensions (mm)			Inside dimension (mm)			Weight
	Length	Width	Height	Length	Width	Height	
Moverbox	2.200	1.600	2.445	2.040	1.500	2.200	450 kg
6FT	1.980	1.950	1.910	1.800	1.860	1.730	450 kg
8F	2.438	2.200	2.260	2.275	2.106	2.050	630 kg
9FT	2.931	2.200	2.260	2.770	2.106	2.050	690 kg
10FT	2.991	2.438	2.591	2.831	2.344	2.376	825 kg
15FT	4.550	2.200	2.260	4.387	2.106	2.050	915 kg
20FT	6.058	2.348	2.591	5.898	2.344	2.376	1.270 kg

- ✓ Storage containers can also be delivered in sets to minimize transport costs
- ✓ You can buy or rent new or used containers

Space for storage and transport



- ✓ Shipping containers (with CSC-certificate) are shippable by road, by sea or by railway
- ✓ Easy to move with a crane
- ✓ Deliverable with wooden or steel floor
- ✓ Stackable up to 9 high
- ✓ Available in standard, high cube, double door, open side, open top or pallet wide
- ✓ Security locks and other modifications are possible
- ✓ With optimal paintwork, all colors are available upon request (RAL-colors)

Dimensions shipping containers:

Type	Outside dimensions(mm)			Inside dimensions (mm)			Weight
	Length	Width	Height	Length	Width	Height	
10FT DV	2.991	2.438	2.591	2.831	2.350	2.390	1300 kg
20FT DV	6.058	2.438	2.591	5.898	2.350	2.390	2200 kg
40FT DV	12.192	2.438	2.591	12.032	2.350	2.390	3800 kg
20FT HC	6.058	2.438	2.896	5.898	2.350	2.680	2500 kg
40FT HC	12.192	2.438	2.896	12.032	2.350	2.680	4100 kg
45FT HC	13.720	2.438	2.896	13.350	2.350	2.680	4500 kg

- ✓ You can buy or rent new or used containers

Versatile space solutions for direct use



- ✓ Office and sanitary cabins can be coupled and are immediately applicable
- ✓ Fast, temporary or permanent solution for multiple purposes
- ✓ Robust steel construction provided with insulation
- ✓ With insulated doors, windows and shutter roller
- ✓ With electricity, lighting and heating
- ✓ Comfortable and can be designed in different varieties
- ✓ With optimal paintwork, all colors are available upon request (RAL-colors)

Dimensions office and sanitary containers

Type	Outside dimensions (mm)			Inside dimensions (mm)			Weight
	Length	Width	Height	Length	Width	Height	
10FT	2.989	2.435	2.591	2.795	2.350	2.340	1290 kg
16FT	4.885	2.435	2.591	4.690	2.350	2.340	1690 kg
20FT	6.055	2.435	2.591	5.860	2.350	2.340	1930 kg
24FT	7.355	2.435	2.591	7.140	2.350	2.340	2250 kg
30FT	9.120	2.435	2.591	8.925	2.350	2.340	2710 kg
6X3m	6.058	2.990	2.610	5.804	2.736	2.300	2700 kg

- ✓ Office containers can also be bought as a transpack (not mounted)
- ✓ You can also buy or rent new or used container

Customized containers

Project management from design to realization



- ✓ Customized containers: the customer chooses the dimensions
- ✓ Different modifications and designs are possible
- ✓ With optimal paintwork, all colors are available upon request (RAL-colors)
- ✓ Even the logo of your company can be painted onto our containers
- ✓ Mechanic International can also take care of the transport, placement and coupling of the containers



References & applications



Open top container with wheels



Environmental containers



Container shop



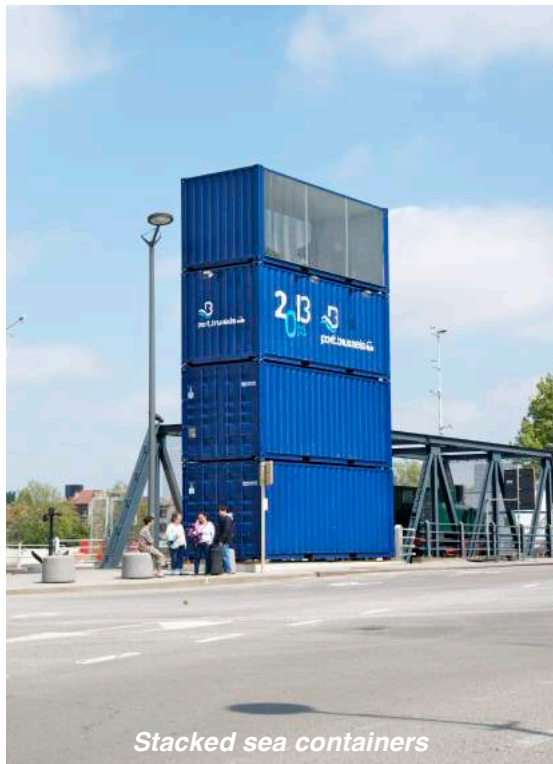
Office containers



Construction site container



Storage containers



Stacked sea containers